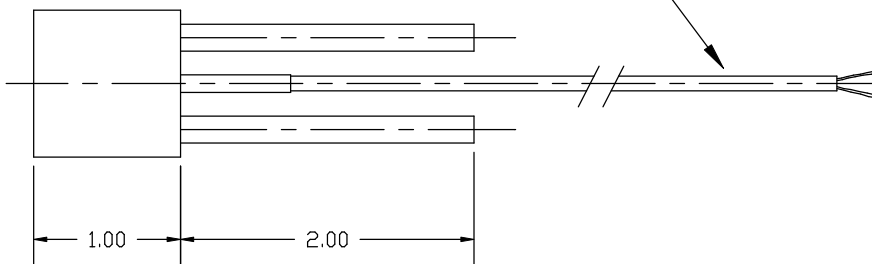
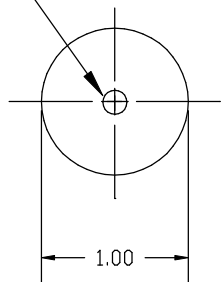


— Sensor diameter varies with range.

FLEXIBLE LEAD:—COPPER CONDUCTORS WITH TEFLON INSULATION OVER EACH CONDUCTOR---TINNED COPPER BRAID OVERALL---CLEAR TEFLON OVERALL. RED(+) BLACK(-) BRAID INSULATED FROM BODY.  
STANDARD LENGTH IS 6 FT.



**W**ATELL CORPORATION

240 JENNELLE ROAD,  
CHRISTIANSBURG, VA.  
(540) 961-7138

This drawing and the design information it contains are the property of the Vatel Corporation, 240 Jennelle Road, Christiansburg, VA 24073. This copy is provided for reference only, and may not be used for fabrication without the express permission of Vatel Corporation.

1000-1  
CIRCULAR FOIL HEAT FLUX GAGE

VATELL